



GULF STONE COMPANY SAOG,

(Manufacturer and Exporters of Engineered Quartz Stones)

Recommended Fixing and Laying Instructions



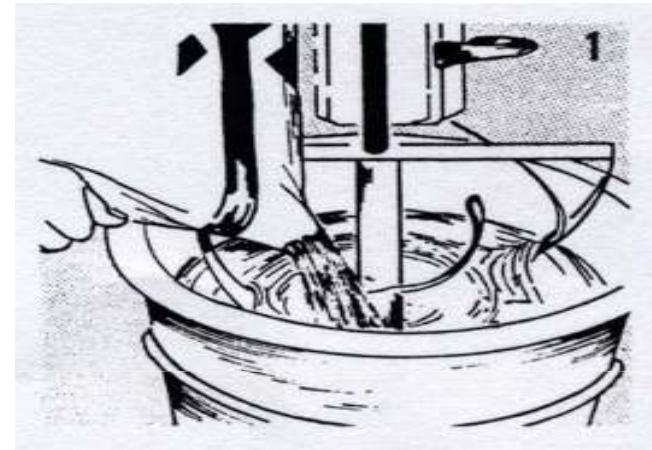
FIXING AND LAYING

1. Latex based adhesive to be used.
2. Minimum of 2-3mm gap to be provided in between each tiles.
3. Base color to be checked before laying.
4. The Surface should be free from moisture
5. Gulf Stone products are for Internal use only.
6. Do not use any harmful acid and alkali for cleaning

FIXING AND LAYING

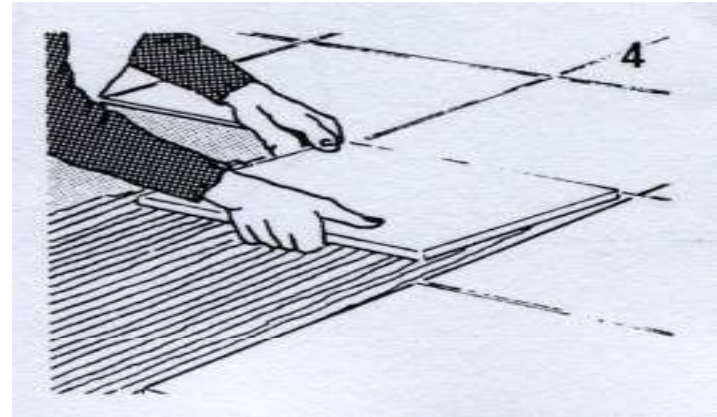
Adhesive shall be prepared as instructed by the Adhesive Manufacturer

The substrate must be absolutely flat, stable, solid, free of cracks, smooth and clean of any dust, debris, oils or any similar substances they may cause tiles to break free.

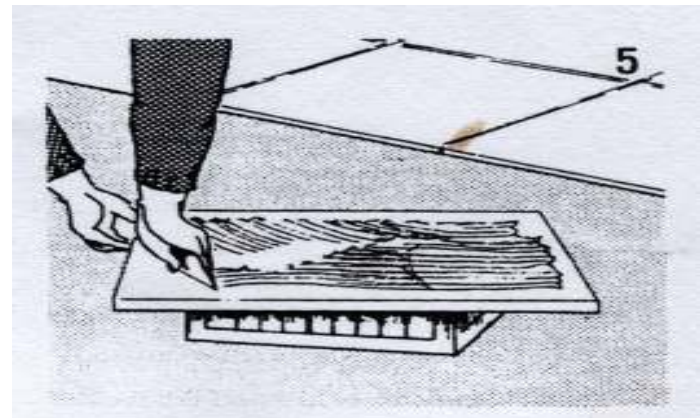


FIXING AND LAYING

Required adhesive mix on the ready surface to prepare about 5mm bed and place the tile

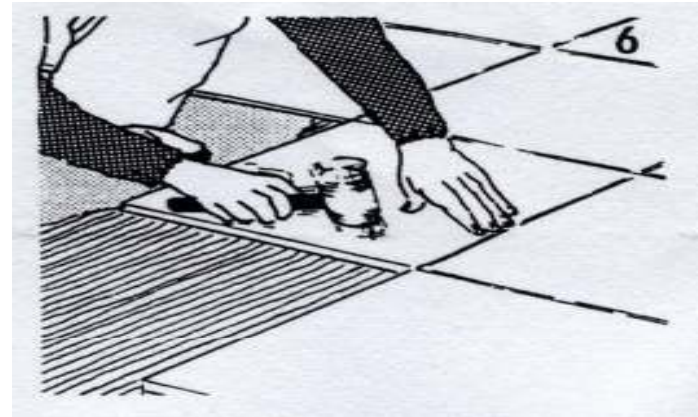


Apply a base coat on the ready surface and as well as the backside of the tile



FIXING AND LAYING

Once the tile is placed, move the tile smoothly, without lifting the tiles. After that, you may tap it gently with the rubber mallet.



After minimum of 24 hours from the setting of the tiles, joints must be filled. Before sealing, the gaps must be thoroughly cleaned.





FIXING AND LAYING

Any excess adhesive that might come to the surface of the tiles after the installation should be immediately removed with wet sponge to avoid any damage to the finish surface of the tiles. It is recommended to protect with damp cloth for at least 24 hours after installation





FIXING AND LAYING

1. After minimum of 24 hours from the setting of the tiles, joints must be filled. ○
2. Before sealing, the gaps must be thoroughly cleaned. ○
3. The surface must be divided up into flooring areas 10 X 10 M. Along these areas, expansion joints must be left at a width of 5-10 mm. ○
4. The expansion joints must be then grouted with polyurethane mastic. ○
5. Use only latex based tile adhesive for fixing GULF STONE products ○



SAFETY MEASURES

1. GULF STONE products should not be stored in open area exposed to sunlight. It should be stored in covered shed till the time it is taken up for application. ○

2. GULF STONE products are very hard and only diamond blades are to be used for cutting or sizing. Wet sawing is strongly recommended and should be cut in well-ventilated area. ○

3. Due to possible shade and texture alterations in the finished products caused by the characteristics of the quartz used, it is recommended to choose the GULF STONE material by laying down on the ground before the installations. ○



SAFETY MEASURES – PAGE 2

- 4. Do not use any harmful acid and alkali for cleaning GULF STONE products. In case of accident clean the surface with mild detergent immediately. ○

- 5. The Luster and Color shade of GULF STONE product may be disturbed or erode by the exposure of acid and alkali. ○

- 6. Before using any cleaning agent, it is necessary to test it on a small area for the suitability ○



CONTACT DETAILS :-

FOR ANY FURTHER INFORMATION, PLEASE CALL US ○

GULF STONE CO., SAOG ○

PO BOX 47, SOHAR INDUSTRIAL ESTATE ○

POSTAL CODE 327 ○

SULTANATE OF OMAN ○

TEL: 00968 26751675 ○

FAX : 00968 26750186 ○

EMAIL : gulfston@omantel.net.om ○

WEBSITE : www.gulfstoneoman.com ○

THANK YOU ○